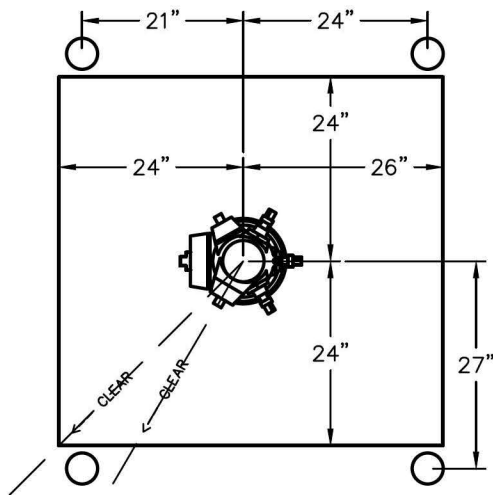
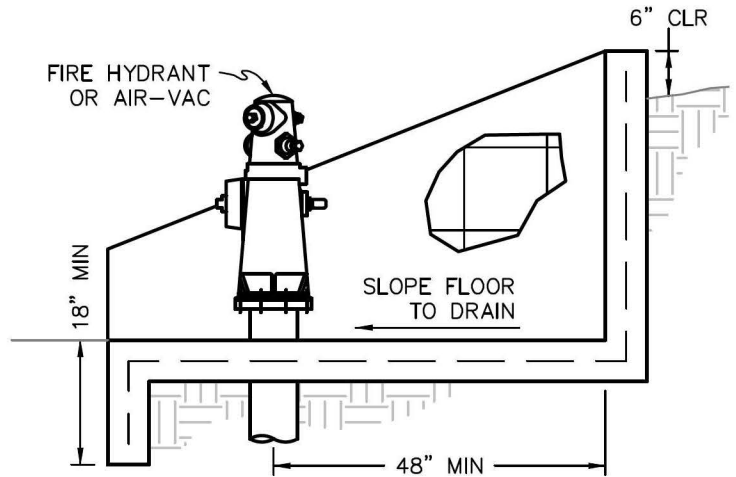


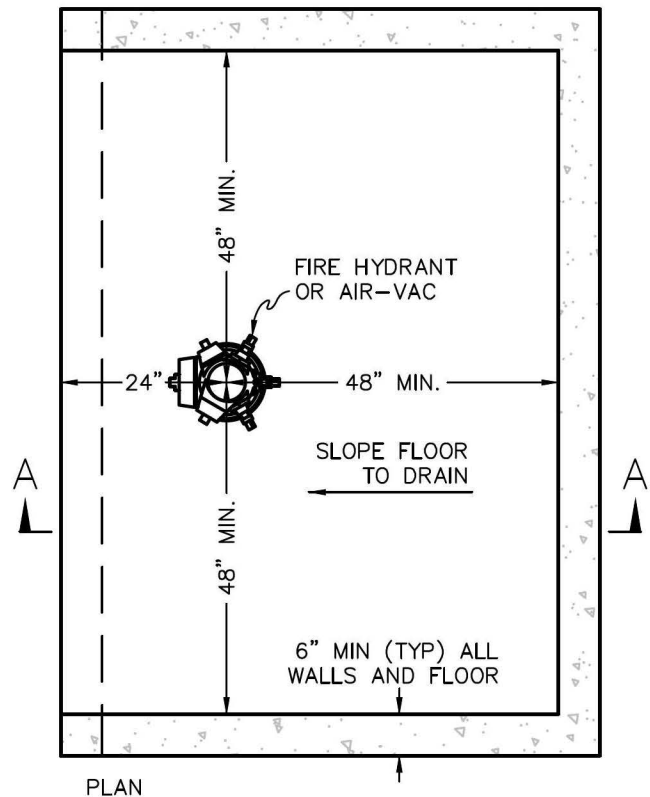
**FIRE HYDRANT OR AIR/VAC
BUMPOUT DETAIL**



**CONCRETE PAD AND GUARD
POST PLACEMENT
(GUARD POSTS WHEN SPECIFIED)**



**SECTION A-A
CONCRETE (OR BLOCK)**



**PLAN
RETAINING WALL
(TO BE USED WHERE GROUND SLOPE EXCEEDS 30% OR AS REQUIRED)**

NOTES:

1. ALL INSTALLATIONS REQUIRE CONCRETE PAD, ALL REBAR #4 @ 12" ON CENTER.
2. CONCRETE BLOCK MAY BE SUBSTITUTED FOR WALL SECTIONS.
3. ALL WALLS EXCEEDING 30" IN HEIGHT REQUIRE BUILDING DEPT. PERMIT.
4. ALL MATERIALS AND CONSTRUCTION SHALL MEET THE REQUIREMENTS AS SPECIFIED IN THE DISTRICT'S "WATER DESIGN AND CONSTRUCTION STANDARDS" MANUAL.
5. PRE-APPROVED MANUFACTURES AND MODEL NUMBERS ARE LISTED IN THE DISTRICT'S "APPROVED MATERIALS LIST FOR WATER IMPROVEMENT PROJECTS."



**Ventura County
Waterworks
District No. 8**

**MISCELLANEOUS DETAILS
FIRE HYDRANTS AND AIR/VAC VALVES**

RECOMMENDED: /s/ _____
DEPUTY DIRECTOR / DISTRICT ENGINEER

APPROVED: /s/ _____
DIRECTOR OF PUBLIC WORKS

JUL 2021

PLATE
210