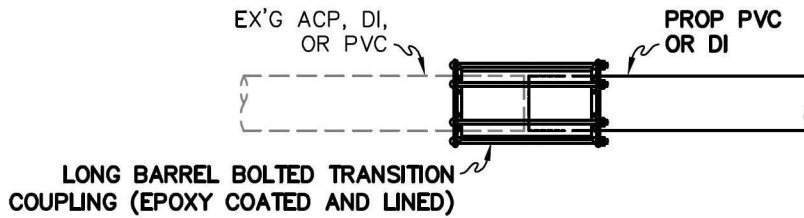
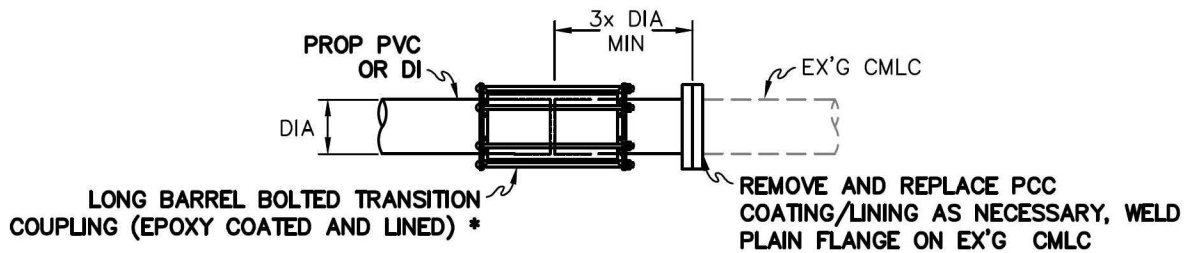


\* MAY SUBSTITUTE WITH 3X DIA C-900 and MJ X FLG ADAPTER



## EX'G AC, PVC, OR DI CONNECTION



\* MAY OMIT IF USING DI BELL FOR NEXT PIPE SECTION

## EX'G CMLC CONNECTION

### NOTES:

1. ALL MATERIALS AND CONSTRUCTION SHALL MEET THE REQUIREMENTS AS SPECIFIED IN THE DISTRICT'S WATER DESIGN AND CONSTRUCTION STANDARDS MANUAL.
2. PRE-APPROVED MANUFACTURERS AND MODEL NUMBERS ARE LISTED IN THE DISTRICT'S APPROVED MATERIALS LIST FOR WATER IMPROVEMENT PROJECTS.



**Ventura County  
Waterworks  
District No. 8**

## DISSIMILAR PIPE CONNECTIONS

RECOMMENDED:

/s/

DEPUTY DIRECTOR / DISTRICT ENGINEER

APPROVED:

/s/

DIRECTOR OF PUBLIC WORKS

JUL 2021

PLATE  
304